

New Aquatic Center and Heritage Oaks Park

Putting Hawthorn Woods on the Map



Architectural rendering of the new Aquatic Center in the Village of Hawthorn Woods.

The Village of Hawthorn Woods has been very busy over the past year planning and opening two tremendous recreational facilities for their community. The new Aquatic Center and Heritage Oaks Park are both one-of-a-kind experiences and provide a wonderful atmosphere for residents to enjoy year round.

The new Aquatic Center will include a competitive swimming pool, a diving area with 1 and 3 meter boards, two waterslides, spray features, picnic areas, a bathhouse and a Culvers Restaurant. The Aquatic Center will also feature a room available for community groups, private parties, and homeowners associations.

As Village Engineer, Christopher B. Burke Engineering Ltd. (CBBEL) designed the on-site civil, drainage (SMC Permit), wetlands (Corp

Permit), and obtained IEPA Water and Sewer Permits, and the right turn lane on Midlothian Road (IDOT Permit).

Mayor Keith Hunt commented, "Over the past five years, we have tried to focus on expanding programs and opportunities in the Village. In particular, we have focused on our greatest asset: our children. By providing them with activities and opportunities, we invest in their future."



New Tennis Courts at Heritage Oaks Park.

ACEC/Illinois Helps Pass Landmark Qualifications-Based Selection Legislation Signed into Law by Governor...

Governor Blagojevich recently signed into law SB 1453 which was an American Council of Engineering (ACEC) backed measure which will reinforce the application of Qualifications-Based Selection (QBS) among local governments. The signed legislation was passed by the Illinois General Assembly during veto session in November of 2006.

By signing the bill, Governor Rod Blagojevich, effectively reinstates a QBS requirement for local governments that was overturned by a recent State court decision.

ACEC/Illinois Executive Director David Kennedy, said, "Our members did a superb job in lobbying the legislature, and we succeeded in putting together a strong coalition of other design professionals and contractor groups, as well as state and local agencies to help us." ●

Source: ACEC-Last Word
ACEC/Illinois

Congratulations!



Congratulations to former Burke Group employee **Timothy Burke** who was recently awarded the Bronze Star-Valor from the United States Marine Corp for his service in Iraq.

[see inside!

- Salt Creek Bike Path
- CBBEL Keeps Wheels Spinning
- Metra Commuter Rail Station, Laraway Road
- Stearns Road Mitigation Site

A Message from Christopher B. Burke

Qualifications-Based Selection (QBS) and Why?

Qualifications-Based Selection or QBS is the industry standard to ensure that qualified professionals are chosen to design roads, bridges, schools, and all government facilities.

Currently in the State of Illinois, architects, engineers, and land surveyors who are hired to design public projects for local governments are governed by the Local Government Professional Services Selection Act. This law, enacted in 1987, makes the qualifications of a design team the first consideration in the selection process before any price negotiation begins.

Recently in Illinois, a court decision attempted to change this process by allowing price to be considered first before determining the most qualified professionals for the job. If this would happen, where the design of public buildings and infrastructure were based on the lowest bidder, the outcome could be devastating to both local governments and the public's safety.



Fortunately, many of the professional associations partnered together this past veto session to support the passage of Senate Bill 1453, which clarifies the original intent of the 1987 QBS law. The legislation was recently signed into law by the Governor.

Now, Illinois, joins 46 other states that use the QBS process to ensure the integrity of all local government projects.

By using the QBS process, not only will local governments get the best professional for the job, but they will also be able to meet their budget needs and ensure that the project is done right.

Sincerely,



Christopher B. Burke, PhD, PE, D.WRE, CPESC
President



Heritage Oaks Park Gazebo.

areas, a Gazebo and several picnic areas. The park also includes two concession stands, restroom facilities, numerous retaining walls and a large detention facility. It is also fully irrigated and has an ongoing landscaping plan.

CBBEL reviewed and verified that plans were in accordance with the annexation agreement between the Village and developer. We coordinated to bring water, sanitary services, ComEd power and SBC phone lines to the site as well as included in the bid set of plans the Gazebo and monument signs designed by the Village Architect.

Also reviewed by CBBEL were the amenities inside the pavilions, which included water, sewer and irrigation controllers, etc. We additionally designed the internal landscaping plan as required by the Village and in accordance with the Village Code.

CBBEL continually performed construction observation for work being performed by Toll Brothers' subcontractors, as well the work included in the bid set.

CBBEL congratulates Hawthorn Woods on their hard work, dedication, and vision for these two great community enhancement projects. ●

By: Lee M. Fell, PE
Project Manager

Aquatic Center and Heritage Oaks Park

continued from page 1

On October 1st, 2006, Mayor Hunt, along with other Village Officials, held a ribbon cutting ceremony for the new Heritage Oaks Park in the Village of Hawthorn Woods. This 35-acre site, which was donated by Toll Brothers, was designed to preserve and named for the large stand of mature oak trees in the southeast corner of the park.

Heritage Oaks Park, which is sure to become a community centerpiece, is part of the Hawthorn Woods Country Club Project, located between Fairfield and Kruckenberg Rd. It features two park entrance monuments, three new baseball



One of the three new baseball fields at Heritage Oaks Park.

fields, three new soccer fields, tennis courts and a basketball court.

And for nature lovers, the park offers an 8-acre lake for fishing and ice skating, extensive walking paths, two playground

CBBEL Project Updates

Salt Creek Bike Path Rolling Meadows, Illinois

Christopher B. Burke Engineering, Ltd (CBBEL) provided Phase I, Phase II and Phase III engineering services for the Salt Creek Bike Path.

The project consisted of the construction of a mile long bikeway from an existing bike path at Cottonwood Park (Palatine Park District) to the existing bike path along Kirchoff Road in the City of Rolling

Meadows. The bikeway is a combination of an off-street bike path along Salt Creek and on-street bike routes, and included a 91 foot pedestrian bridge over Salt Creek. The path also



required coordination with the Palatine Park District who co-sponsored the project. The bike path is part of the City of Rolling Meadows Master Bikeway Plan.

Phase I included:

- Topographic Survey;
- Alternate route studies;
- Development of horizontal and vertical geometry in accordance with AASHTO Bicycle Guidelines;
- Design and permitting of a bicycle bridge over Salt Creek with IDNR and the Army Corps;
- Preparation and design approval for a Local Project Development Report in accordance with IDOT/FHWA standards.

Phase II services included the preparation of plans, specifications and estimates in



accordance with IDOT requirements. CBBEL also provided a full-time resident engineer to serve as the City's liaison with the contractor and the residents, coordinate material inspection, document the daily activities, inspect the work in accordance with the approved plans and measure and calculate quantities. ●

By; Jason G. Souden, PE

CBBEL Keeps Wheels Spinning

CBBEL has planned, designed, and provided construction observation for over 10 bicycle/multi-use paths for various clients over the past five years. Each bike path has its own unique challenges and constraints. Some of these challenges included:

- Multiple jurisdictions
- Multiple funding sources
- Structural modifications to existing bridges
- Bicycle bridges over wetlands, floodplains, and floodways
- Bicycle paths through or adjacent to wetlands, floodplains, and floodways
- Grade separated bike facilities
- Bicycle path lighting
- Construction of bicycle paths in sensitive environmental areas



- Construction of bicycle paths in densely urban areas
- Incorporating bicycle path design into other facilities

Various bike path projects include:

- Barker Avenue, Kirchoff Road, Old Plum Grove Road/Salt Creek, and Rohlwing Road Bicycle Paths for the City of Rolling Meadows.
- Midland Trail over Addison Creek for the City of Northlake.
- Great Western Trail Bridge over Union Pacific Railroad for the Village of Lombard.
- Prairie Path Ornamental Lighting Improvements for the Village of Lombard.
- Dellwood Park West Multi-Purpose Trail over the I&M Canal for the Lockport Township Park District.
- Metra Commuter Parking Lot Improvements including new multi-purpose trail filling a gap in the Green Bay Bicycle Trail for the Village of Wilmette.



- Redmond Reservoir and Redmond Park including bicycle trail system interconnecting major recreational facilities of the park crossing over two tributaries of Addison Creek for the Village of Bensenville.

CBBEL is currently performing Phase I services for the Deerfield Road Bike Path for the Lake County Division of Transportation, Segment 4 of the DuPage River Trail for the City of Naperville, and Fire Station No. 26 Bike Path for the Village of Wilmette. ●

By, Michael E. Kerr, PE

Metra Commuter Rail Station, Laraway Road New Lenox, Illinois

CBBEL was retained by Metra to design and permit a new 300 stall commuter parking lot, a new 500 square foot warming house, and a 465 foot platform in the Village of New Lenox. The site provides for approximately 500 future parking stalls. The project required a new access road from Laraway Road to the commuter parking lot and included lighting, water main, sanitary sewer, storm sewer and stormwater management for the current construction and future development. The project required IEPA permits for water and sanitary, Will County permit for stormwater, and a Village of New Lenox permit.

Attending the official ribbon cutting ceremony were (from left to right), Will County Board Chairman James Moustis, Congressman Jerry Weller, New Lenox Mayor and Metra Board Member Mike Smith and Metra Board Chairman Carole Doris. ●

*By, Michael E. Kerr, PE
Lee M. Fell, PE*



Stearns Road Mitigation Site Kane County, Illinois

The Stearns Road Corridor extends from Randall Road east approximately 4.6 miles to the Kane/DuPage County line and includes a new Fox River Bridge. The project will be constructed in six stages at an estimated cost of \$145 million.

CBBEL completed an Environmental Vision Document for the Stearns Road Corridor during the planning of the project. The Vision Document identified a Direct Impact Mitigation Site located between the Fox River and IL Route 25 along the Stearns Road Corridor. The

proposed plan for this property included a number of existing, enhanced, restored, and created environmental resources whose design character was driven by resource agency requirements.

Stage I of the Stearns Road project is the construction of the Stearns Road Direct Impact Mitigation Site now known as the Stearns Road Wetland Mitigation site.

CBBEL completed plans, specifications, and estimates for the Stearns Road Wetland Mitigation site. The project includes the construction of:

- 11.7 acres of wetland mitigation;
- 12.8 acres of compensatory floodplain storage;
- 1500 feet of streambank restoration along Brewster Creek;
- 5 detention basins for stormwater management;

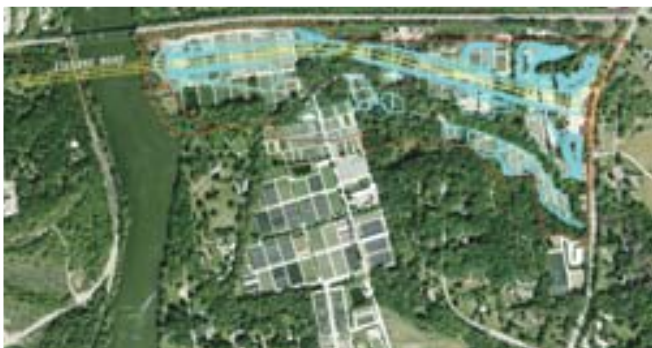
- Stearns Road roadway embankment on new alignment from the Fox River to IL Route 25; and
- Special waste removal.

The plans also included tree preservation, several planting and seeding zones, and an extensive stormwater pollution plan. The site provides all of the wetland mitigation and compensatory storage for the entire Stearns Road Corridor.

In addition to preparing the plans, specifications and estimates, CBBEL secured IDNR, Kane County, and Kane-DuPage Soil & Water Conservation District permits and assisted with securing the USACOE 404 permit.

Bids were received for the project in November and construction is expected to begin in early 2007 and be completed in 2008. ●

*By, Michael E. Kerr, PE
Melanie Price, PE
Project Manager*



Aerial view of Stearns Rd. site plan.

Where Things Are, What Things Are Like...

CBBEL GIS Services

Geographic Information Systems (GIS) is a computer system which processes, manages, and updates large amounts of information that links geographic information (where things are) with descriptive information (what things are like).

More and more municipalities are recognizing that GIS will give them the tools to operate and manage large amounts of information and that there is a necessity to develop their own GIS program. Establishing a GIS program correctly can save a municipality money, provide better service to the public and improve the internal workings of a local government.

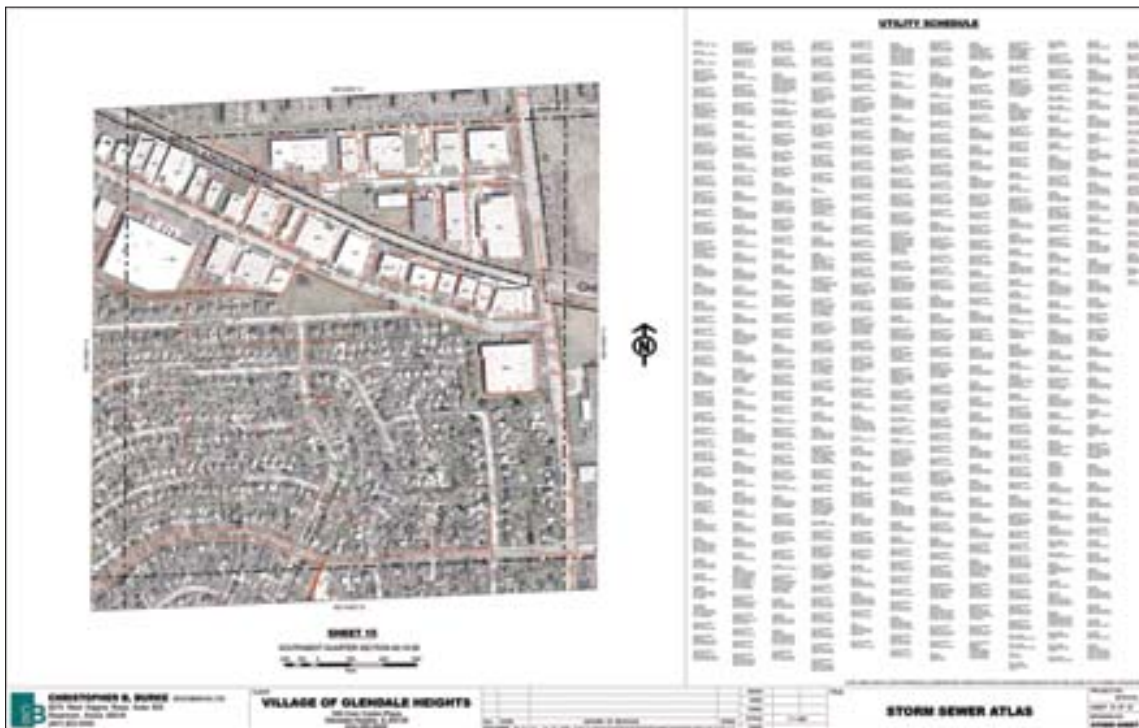
As many municipalities experience decreased funding along with an increased demand for services, GIS allows them to manage a large quantity of information at a highly efficient level. CBBEL has the resources and staff to assist municipalities with a detailed assessment and develop-

ment of a GIS program. As we have discovered, each municipality may have different needs for GIS. Once these needs are recognized, CBBEL can work through and implement an individually suited GIS program.

Regardless of which level a community desires, the beginnings are much the same. CBBEL will coordinate the collection of data from many different sources at Federal, State, and Local levels. For example, Counties, through intergovernmental agreements, can supply assessor's information, parcel lines, aerial photography, and two foot



contour maps. Depending on the municipality's individual needs, CBBEL can contact other suitable agencies and gather additional data to create an accurate and comprehensive base of information. As the GIS program grows, other needs may arise and having the proper base will allow the expansion into different uses.



As many of our clients can attest, GIS can be utilized by virtually all City and Village departments, including community development and planning, zoning, police, fire, school districts, as well as public works. In the end, all of this information is available through the GIS software at the click of a mouse.

For further information on GIS and CBBEL's capabilities, please contact our GIS Specialist, Dave Walters at 847-823-0500 or visit www.esri.com.

By: John R. Murphy, PE, PLS
Dave Walters, GIS Specialist

CBBEL and Friends Host 2006 IML Conference Reception



(From left to right) Reception Hosts: Michael Durkin, Richard Ramello, Don Storino Sr., James Pandolfi, (Crowe) and Chris Burke

CBBEL, along with friends from the accounting firm of CroweChizek and the law firm of Storino, Ramello and Durkin, hosted a reception for several hundred of the

attendees at the 93rd annual IML Conference held in Chicago last September.

“It is always great to see so many of our current clients at one time. It is also a wonderful opportunity for many to make new friends and see past acquaintances” said Chris Burke, President of CBBEL.



CBBEL Guests: Chicago Ridge Mayor Gene Siegel with wife Linda, and Palos Hills Mayor Jerry Bennett.

The 2007 IML Conference will be held from October 18th–21st at the Hilton Chicago Hotel. For more information, please contact the Illinois Municipal League at 217-525-1220. ●

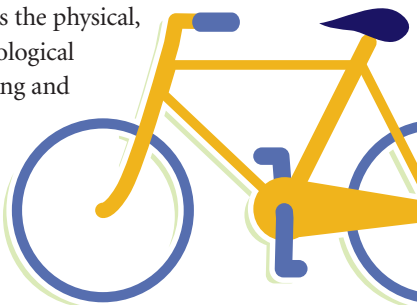
Bike to Work!

Several employees logged a total of over 5,000 miles participating in The CBBEL Bike-to-Work Program. Participants included long time commuter Dave Urban, triathlete Jonathan O’Connell, and CBBEL Vice President Dan Crosson. CBBEL’s Bike-to-Work Program was initiated in May 2006 and includes the following incentives:

- CBBEL rewards bicycle commuters for every mile commuted at the current IRS mileage reimbursement rate (\$0.485). Employees will be required to report their mileage weekly.
- CBBEL provides all bicycle commuters a guest pass (15 visits) to the Willow Creek Health Club for use of shower facilities. After the 15 visits are complete, employees will have the option of joining the Club or paying a minimal towel fee.

In addition to the above incentives, CBBEL is currently constructing a shower/storage facility closer to our main office in Rosemont and is upgrading the current bike rack. CBBEL recognizes the physical, mental, economical, and ecological benefits to bicycle commuting and fully expects participation in the program to increase significantly over the next year. ●

By: Michael E. Kerr, PE



CB B Christopher B. Burke Engineering, Ltd.

- Stormwater Management
- Water Resources Engineering
- Transportation
- Municipal Engineering
- Mechanical Engineering
- Structural Design
- Environmental Consulting
- Construction Engineering
- Surveying
- Design/Build
- Site Development
- Expert Witness Testimony

Office Information

CBBEL – Rosemont

9575 West Higgins Road, Suite 600
Rosemont, IL 60018
Tel: (847) 823-0500
Fax: (847) 823-0520

Illinois

CBBEL – West

116 West Main St.,
Suite 201
St. Charles, IL 60174
Tel: (630) 443-7755
Fax: (630) 443-0533

CBBEL – Peoria

202 NE Madison, Suite
301
Peoria, IL 61602
Tel: (309) 676-9000
Fax: (309) 676-9001

CBBEL – New Lenox

318 Alana Drive
New Lenox, IL 60451
Tel: (815) 463-9050
Fax: (815) 463-9065

Indiana

CBBEL – Indy

115 West Washington St.
Suite 1368 South
Indianapolis, IN 46204
Tel: (317) 266-8000
Fax: (317) 632-3306

CBBEL – Ft. Wayne

130 West Main Street,
Suite 12
Ft. Wayne, IN 46802
Tel: (260) 422-9395
Fax: (260) 422-3159

CBBEL – Crown Point

One Professional Center,
Suite 314
Crown Point, IN 46307
Tel: (219) 663-3410
Fax: (219) 663-3450

CBBEL – South Bend

340 Columbia Place,
Suite 110
South Bend, IN 46601
Tel: (574) 282-8001
Fax: (574) 282-8003

CBBEL – Columbus

50 Washington Street,
Suite 2A
Columbus, IN 47201
Tel: (812) 376-9252
Fax: (812) 376-9260

www.CBBEL.com

Call us today for all your engineering needs!

Christopher B. Burke Engineering, Ltd.
9575 West Higgins Road
Suite 600
Rosemont, IL 60018

PRSR
First-Class
U.S. Postage
PAID
Addison, IL
Permit No. 1